



LONG WHATTON AND DISEWORTH SCOUT GROUP & FRIENDS

19TH ANNUAL REPORT APRIL 2015 to MARCH 2016



**... EVERYDAY ADVENTURE
ON YOUR DOORSTEP**

~ 0845 519 8037 ~ info@longwhattonscouts.org ~ www.longwhattonscouts.org ~

Established Friday 13th June 1997 – Celebrating 19 Years of Success

Location: Long Whatton Methodist Church
Date: 10th June 2016
Time: 6:30pm for a 6:45pm Start



AGM 2016 Agenda

1. GSL's Introduction
2. Attendance & Apologies
3. Election of Officers
 - a. Chair (GSL's Nomination)
 - b. Secretary
 - c. Treasurer
 - d. Parent Representative(s)
4. Group Chair's Address
5. Minutes of meeting / AGM 2015
6. Group Section Reports
 - a. Beavers
 - i. Oakley
 - ii. Diseworth
 - iii. Piper
 - b. Cubs
 - i. Diseworth
 - ii. Piper
 - c. Scouts
 - d. Explorers
 - i. The Village People
 - ii. Young Leaders
 - iii. Duke of Edinburgh Award
 - e. Network
 - f. Projects
 - g. Meeting Places
7. Treasurers Report
 - i. End of Year Financial Report 2015/16
8. Date & Venue of the next Meeting



Long Whatton and Diseworth Scout Group Group Scout Leaders Report April 2015 to March 2016

Welcome to our 19th AGM !

Again we have been able to increase our numbers and over the year nearly 60 young people from the ages of 6 to 18 years have taken part in Scouting with Long Whatton and Diseworth Scout Group. This is all due to the dedication and enthusiasm of over 20 Leaders, Committee members and parent helpers.

As well as giving their time for the weekly activities, camps and events, our leaders have also spent more time taking part in Scout training and this year, 3 Leaders have completed their 'Wood Badge' (which is actually a leather strand with beads!) This involves completing 19 modules covering many aspects of leadership, management and skills involved in being able to deliver Scouting to young people. Presentation of Awards will take place soon, so watch out for them proudly displaying their beads!

Our 'Busy Bee' day has made a huge difference to our meeting place, with new storage and our own campfire square at the back of the Chapel. Many thanks to the parents and leaders who helped.

For many activities we have joined up with other groups in the District including Castle Donington, Ashmount and Thorpe Acre Scout Groups and our thanks go to the leaders of those groups for their help and support during the year.

Activities taken place have included expeditions to the Peak District, Hogwarts District Camp, an amazing trip to Bavaria to meet our German Scout Friends, Beaver Sleepovers, Cub Camps, Back to Basics camps, Discos, Ice skating, Swimming and much more, photos of which you can see on our Facebook page.

In the coming months we are looking forward to taking part in County Cub Camp at Kirby Mallory to celebrate 100 years of Cub Scouting, a Beaver Sleepover to celebrate 30 years of Beaver Scouting, a Water Splash day for Cubs, a Survival camp for Scouts and Explorers and our summer camp – Charnwood 2016, Leicestershire's International Camp at Whatton House for Scouts and Explorers with a day visit from our Cubs and Beavers.

Another year of amazing Scouting taking place in Long Whatton and Diseworth.

Jenny
Group Scout Leader



**i.VOLUNTEER
WILL YOU?**
Bea

Long Whatton and Diseworth Scout Group Chairs Introduction



Moving into my third year as the group's executive committee chair person, I have had the pleasure seeing the developments and growth of Long Whatton & Diseworth Scout Group.

Within this year the group have gone from strength to strength, in new membership (both scouts and adult volunteers) and a busy but quality and active programme delivered for all sections. This is down to the hard work and commitment of the adult scout leaders and management team, of which we owe our deepest thanks to.

To say we have had a busy year, I had to try and remember what has been done? "Facebook to the rescue" and a number of hours to sieve through, but to summarise the group have been involved in a whole variety of new and exciting learning from participating in activities, trips and camping, therefore gaining not only new learning and life skills but badges, awards and national awards.

So what have we done this year . . . The Duke of Edinburgh Award (Bronze & Silver) expeditions in the Derbyshire white peaks area, navigation skills weekend, district camp, the BIG Germany Summer Camp, archery taster sessions, an ice skating trip, young leader training, Beavers camp fire, marshmallows and song singing, swimming, badge making, golf, and not forgetting most recently, the joint Easter Camp with Ashmount Inclusive Scout Group and so much more . . .

It was nice to hear that Rosie Twigger, one of our scout members who nominated in the Lord Lieutenants Award in the "Young Volunteer of the Year" category, a big Well Done.

Behind the scenes this year the leader team have also worked hard to raise much needed funds, completing funding applications, planning and running bag packs, sending letters with our groups wish list to local businesses and national trusts. All funds granted and monies raised locally have helped to replace and increase the group's equipment and resources, to support the growth the group have had. It is important for me to say a huge thank you to all of those that have supported our group financially.

Training of our adult volunteers is important, it shapes the scouting offered and so I would like to also share with you some of the achievements this year, of some of our adult leaders who have gained their "wood badge" for completing their adult leader training, Well Done to Carl, Rebecca and Rachel.



**Long Whatton and
Diseworth Scout Group**

BEAVERS

OAKLEY
DISEWORTH
PIPER

cubs

DISEWORTH
PIPER

SCOUTS

EXPLORERS



LONG WHATTON AND
DISEWORTH SCOUT GROUP

network

/activesupport

**EVERY CHILD HAS THE
RIGHT TO AN ADVENTURE.**
Bear Grylls: our new Chief Scout



I know that everyone involved in scouting are already working on new plans and delivering scouting for 2016/17, with the International Charnwood 2016 camp around the corner, The Duke of Edinburgh Gold award group plans and projects to revamp and clean-up of our scout home.

Finally, I would like to say a huge "Thank You" to everyone and I look forward to the coming year of scouting fun.

Yours in Scouting



Darren Smith
Group Executive Committee - Chair



→→→→ SCOUT MOVEMENT QUICK FACTS



150 MILLION
UK SCOUTS SINCE 1908



200+ ACTIVITIES

Everything from **Archery to Zorbing**

2,000,000
NIGHTS A YEAR SPENT
ON AN ADVENTURE!

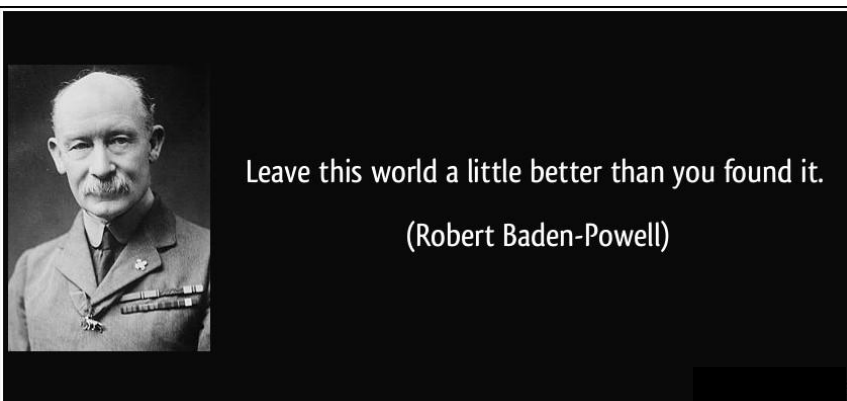
**Minutes of Long Whatton and Diseworth Scout Group AGM
Held on Friday 5 June 2015 at 6:15 pm at Long Whatton Methodist Church**



Present: Jenny Laws (GSL), Lesley Mitchell (Loughborough District rep), Rev Diane Grice (Methodist minister), Karl Hitchen (treasurer), Margaret Williams (secretary) and approximately 50 leaders, parents, friends and young people.

Apologies: Darren Smith (Chair – held up in traffic on the M1), Ashcroft family, Attridge family, Burnett family, Terry and Adam Lloyd, Mr & Mrs Muckle, Mousley family, Liz O'Meara and Beth Taylor

1. The evening began with a talk and Powerpoint presentation by 6 scouts on an expedition they had undertaken to research leisure activities available around Matlock. They were all awarded their Expedition challenge badge.
2. A Powerpoint presentation was shown of photographs of Long Whatton and Diseworth Scouting activities over the past year.
3. Adam Graves was presented with his Chief Scout's Silver Award, and invested into the Scout section.
4. In the continued absence of Darren, Jenny read the GSL's report. Printed copies of Section reports were with Darren, and would be distributed later and posted on Facebook.
5. The Group Executive Committee was re-elected:
 - i. Chair – Darren Smith
 - ii. Treasurer – Karl Hitchen
 - iii. Secretary – Margaret Williams
 - iv. Parent reps – Kate Champneys, Darren Graves, Carol Twigger
 - v. A Beaver parent rep was still needed,
 - vi. and also a rep from the church. Rev Grice agreed to find a church rep.
6. Karl summarised the treasurer's report, which would be available in printed form with the other papers. Income for the year had been £10,800 and expenditure £9,575. However, a further £1,400 was already allocated so further income/fundraising would be needed. Gift Aid had been £174 in the previous year, but had not yet been received for last year. He expressed thanks to all the leaders, especially Jenny.
7. Lesley brought greetings from the district, commenting on another busy year of activities. She thought Long Whatton and Diseworth had probably seen the greatest growth in numbers over the past year, in the whole County.
8. Pete Gibbon was invested as a leader, but would soon be leaving to move to Scotland.
9. The meeting closed at 7:20 pm, after which a barbecue and salads, followed by the Group's 18th birthday cake, were enjoyed. The cake was cut by Alfie, a Beaver Scout.



Baden Powell & Gilwell

**Long Whatton and Diseworth Scout Group
Oakley Beaver Colony – Mondays 3.30 to 4.30 pm at The Friendship Centre
Annual Report April 2015 to March 2016**

The beavers have had lots of mini adventures recently including playing with fires, having the opportunity to join Long Whatton, Ashmount and Castle Donington on a camp and moving into their new home to have meetings in on a Monday night.

Their meetings have consisted of arts and crafts in which we made bracelets and wrote the story for our puppet show; we have made fires and had fun with the Kelly kettles.

They've all been ice skating, attended the blessing of the new flags and been swimming to work on their staged badges.

Oakley beavers have attempted badges such as the 'My Adventure' badge which they have nearly completed, and have also started working towards their 'Teamwork' badge.

New activities have been introduced into the sessions to fill time such as snowball fights to both work on teamwork and help the leaders come up with new ideas for the next programme.

They've been playing new games such as spot tag and the pirate game. The programme for the next term is a mixture of ideas from both the young leaders and the beavers who gave their ideas to us through the 'snowball fight' and includes trying to complete/work on a badge every other week.

These badges include the 'Camp Craft' badge which was highly requested, their 'First Aid' level 1, their 'Creative' badge and their 'Disability Awareness' badge to name a few.

There are also some new activities for the Oakley colony to try such as Cancakes (pancakes in a can) and another disco in the summer.

Rosie - Explorer Scout Young Leader

Thanks Rosie

Numbers have dropped slightly on Mondays with 5 Beavers attending regularly, some may say this is small, I would say there are 5 more young people enjoying Scouting than if we didn't meet.

The Colony may only have a few members but that doesn't stop the Adventure that's for sure.

However without the support of Rosie, Jack and Carol, it couldn't happen so a big thanks to them for all their help and continued support.

Colin – Beaver Scout Leader



BEAVERS

Long Whatton and Diseworth
Oakley Colony



**Long Whatton and
Diseworth Scout Group**

Long Whatton and Diseworth Scout Group

Beaver Colony and Cub Pack – Tuesdays 3.30 to 4.30 pm at Diseworth Village Hall

Annual Report January 2016 to March 2016

This small band of around 11 young people on a good week has been formed out of 3 taster sessions we ran at Diseworth Primary School in January 2016 this included Kelly Kettles, Geocaching Rubber Band Guns and various traditional Scout Games.

During their first term, they have managed to complete their Communication Badge, start the Creative Badge and do lots of small bits to many badges.

The term ended with a Camp fire and Sing along.

It is still very early days for this group and is just about going to make it to the end of the Summer Term 2016 and as usual we need more Adult Volunteers.

The future looks promising as this Colony and Pack start to engage with the wider group programme.

It again must be said that although low in numbers the young people have already been on some amazing adventures, they are great young people and fun to work with.

A brief insight into our newest members of the Long Whatton and Diseworth Scout Family . . .

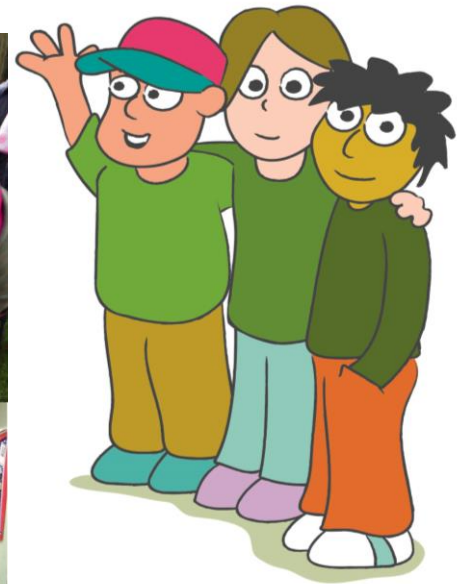
Colin – Section Leader



Long Whatton and Diseworth
Diseworth Colony



Long Whatton and Diseworth
Diseworth Pack



**Long Whatton and
Diseworth Scout Group**



**Long Whatton and Diseworth Scout Group
Piper Beaver Colony – Fridays 5 to 6 pm at Long Whatton Methodist Church
Annual Report April 2015 to March 2016**



Long Whatton and Diseworth
Piper Colony

The Beavers have had a busy year with 21 children being part of the group at some point over the year. We have seen our founder members moving on to cubs along with several others who have recently turned 8. The group is now down to approximately six young beavers, which I am looking forward to working over the next two years.

We had four Beavers achieving their Bronze Chief Scout Awards, as well as many others getting a range of badges from International, hobbies and collecting to My Outdoors and Team Challenge Awards. It has been a difficult year with the change over from the old badge system to the new badge system, so many of our beavers have a range of new and old.

As always the name of the game has been adventure and fun, with Beavers having fun at camp, hiking around the village as well as further afield for JOTT, trying new activities such as archery, rubber band alley and the surprising favourite of international costumes, and let's not forget the age old favourites of camp fires, marshmallows and hot chocolate as well as team games.

It has been a fun year and I wish all the Beavers moving on to cubs a brilliant summer term with loads of new challenges and fun camps.

Nic - BSL Piper Colony



**Long Whatton and
Diseworth Scout Group**



Long Whatton and Diseworth Scout Group

Cub Pack – Fridays 6 to 7.30 pm at Long Whatton Methodist Church

Annual Report April 2015 to March 2016



Long Whatton and Diseworth
Piper Pack



Our current cub count is 9, which is 2 up from this time last year! But with Easter passing we will be gaining 10 from Beavers, but will also losing George to Scouts.

We've had a packed programme this year that has allowed all the cubs to gain lots of activity badges, some of which they chose themselves. We have also given out some of the challenge badges that count towards the Chief Scout Silver.

The biggest badges we did were the DIY badge- which saw the Cubs use various power tools to make their own bird feeders and the Science badge, where we made electrical circuits using conductible dough and ice cream using our own kinaesthetic energy. We also did our International, Navigation, Air Activities, Road Safety, Book Reader, Hobbies, Physical Recreation and Team Work Challenge badges... I think that's all of them.

Our winter term trips saw all sections visit the National Ice Arena in Nottingham for an afternoon of skating and a trip to the mini golf course in Loughborough, where we even saw some hole in ones!

This year the Cubs have had 3 Camps they have been able to attend. Camping is an important part of scouting and is crucial if they wish to gain their Chief Scout Silver award (the highest award in Cubs). First we had a German Themed Summer Camp with the Beavers at Johns Lee Wood. Lots of activities were on offer such as rubber band ally, climbing, outdoor games and camp crafts. Next up was the district summer camp that was enjoyed by all sections in the group. The camp was Harry Potter themed and there were lots of outdoor activities for the young people to choose from. Oscar took these opportunities and gained his Our Adventure Challenge Award. Finally we had our Easter camp at the Oaks campsite, which was themed around scouting skills for the cubs. We didn't let the rain get us down and cubs learnt a lot about preparing and cooking their own food on a camp fire, lighting the fire and keeping it going was also important as well as making useful camp gadgets using wood and lashings.

This year is the Cubs centenary year and there are lots of things to look forward too. We have already started working towards are Cubs 100 challenges, near to completing the 1st term and in the summer we have our centenary camp at Mallory park!

Finally we have introduced our Cub of The Week Award, which has been award to many worthy candidates for demonstrating the Cubs Scout Laws at meetings.

Rebecca - Cub Scout Leader



Long Whatton and Diseworth Scout Group
Scout Troop – Fridays 6.30 to 8.30 pm at Long Whatton Methodist Church
Annual Report April 2015 to March 2016

Scouts have been a little up and down with numbers this year with some of them moving on to Explorer and only one or two moving on and up from Cubs.

During the year there was an attempt to split Scouts from Explorers as the sections grew, they usually meet together, or at least the Flag up and Down bit of the meeting is always together, all depending on the planned activity.

At this moment in time we have seven Scouts, and have managed to secure Jason as a dedicated Scout Leader, so as they say 'the only way is up'. We are jointly meeting together with Jason and Alex working closely together.

Some ideas around an Air Scout Patrol and Sea Scout Patrol have been formulated and also some ideas around meeting in Diseworth to encourage participation there, so keep an eye on the news and we shall see where it takes us.

Early in the Year the Scouts completed their Expedition Challenge Badge in Derbyshire, they showed well developed skills and knowledge around navigation, and completed a great presentation of their adventure. This was repeated again in September in the Staffordshire Moors

Of course our biggest achievement during the 2015/16 year was our amazing two week summer camp to Bavaria in Germany to see some old friends. This was a massive adventure starting with a train ride across Europe and Germany.

We spent two weeks in 35° heat and had a fantastic time and took part in loads of activities and cultural visits.

Hopefully we will be able to repeat this in the next few years with our up and coming generations.

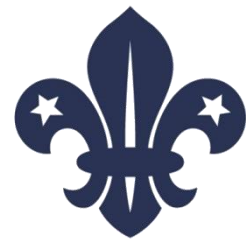
What else did we get up to? Pioneering, Arts, Craft, Fires, sleeping in hammocks, Ice Skating, hiking, cooking, first aid, and loads more Everyday Adventures . . .

Colin - Scout Leader



**Long Whatton and
Diseworth Scout Group**

Long Whatton and Diseworth Scout Group
The Village People Explorer Scout Unit – Fridays 6.30 to 8.30 pm
at Long Whatton Methodist Church
Annual Report April 2015 to March 2016



EXPLORERS

Long Whatton and Diseworth
The Village People ESU

This year Village People Explorer Scout Unit has once again been abuzz with activity.

Having joined the section myself at the back end of last summer, I was thrown straight into the action with a Bronze D of E trip to Derbyshire; as this was my first experience with the group, I was extremely impressed with the 'can-do' attitude and the maturity of all those taking part.

I, for one, was shocked that everyone managed to stay on route and follow the course right up until the finish, without losing anyone! Now, that's what I call a result!

In addition to this, the Explorers have also partaken in various pioneering challenges, including making hammock frames and a range of other structures.

On the first evening that I organised independently, the Explorers were joined by the Scouts in building an Ikea style project. Armed with instructions and flat pack assembly kit, the aim was for them to create a giant sized version of the childhood classic 'Hungary Hippos.' Having navigated the instructions and successfully constructed the game, they discovered (much like Christopher Columbus) that the floor in the hall was not flat, giving one team a clear advantage on the rest. That said, a great time was had by all!

Other evening activities have included campfire nights making s'mores, archery, Tie-dye T-shirts, Para cord bracelets and many more hours of fun.

In the last few weeks the Explorers and Scouts have once again come together to complete their cooking activity badge. Having tapped into their inner Ainsley Harriet's, they created many wonderful dishes in a 'Ready, Steady Cook' fashion.

Whilst we have completed so many exciting activities as a section so far, there are still many to come in the near future.

Alex
Explorer Scout Leader

Of course our biggest achievement during the 2015/16 year was our amazing two week summer camp to Bavaria in Germany to see some old friends.

This was a massive adventure starting with a train ride across Europe and Germany.

We spent two weeks in 35° heat and had a fantastic time and took part in loads of activities and cultural visits.

Hopefully we will be able to repeat this in the next few years with our up and coming generations.

Colin
Adult Volunteer



**Long Whatton and Diseworth Scout Group
Young Leaders – Fridays 8.30 to 9.30 pm at Methodist Church
Annual Report April 2015 to March 2016**

As a group we have always have some amazing Explorer Scout Young Leaders who have supported our Sections.

Jessica has supported Cubs since they first started in 2011, I think it was.

Rosie and Jack support Monday & Friday Beavers.

George, who also now supports Friday Beavers, spent a long time supporting Kegworth Scouts.

Beth helps with her local guide group.

Adam and Billy are going to be helping with a new piece of work in Diseworth.

Sarah we have yet to place.

That is eight young leaders in all age 14 to 17 who are helping our group to take part in everyday adventure. I am very proud of them for making such a commitment.

However, things sort of creep up on you and until something happens to help you think about things, you do not really realise what has happen. It was only this year, 2015, when a County Young Leaders Training Weekend sparked the interest of the majority of these young people.

A weekend at Johns Lee Wood certainly inspired them to complete their training, (something we will do over 2016), and they came back with loads of ideas and inspiration that has really made a difference to our younger section meetings.

I can't thank the County Explorer Team enough for their input, they did a great job, our making our young people feel 'Empowered, Valued and Proud' *

It looks like over the coming year we will do more with our young leaders to help them achieve.

Big thank to you all for your volunteering with LW&D Scout Group.

Colin
Adult Volunteer



Our Young Leaders receiving their Awards after the County Training Camp

*from the Scout Association 2018 vision



EXPLORERS

Long Whatton and Diseworth
The Village People ESU



**Long Whatton and Diseworth Scout Group
Duke of Edinburgh Award Unit ESU – Fridays 8.30 to 9.30 pm at Methodist Church
Annual Report April 2015 to March 2016**



Well we got off to an amazing start in April last year with an amazing expedition week in East Derbyshire Followed by a similar event in the Staffordshire moors in September and a training weekend in February 2016.

Although these expeditions were not just focused on DofE, because the Scouts did their Expedition Challenges and they also counted towards Chief Scout Awards.

DofE is currently having a bit of a break at the moment while exams and other commitments are taking place and we shall be looking at some sort of Expedition for September 2016.

Training has taken place for all involved and we are also working with our sister group, Ashmount where we have several Explorers signed up with The Village People ESU DofE Unit.

April 2015 to March 2016 we managed to enable two Bronze awards to be completed, however a lot of young people are at various stages of completion. We do have a philosophy that DofE is not a race, young people have until they are 25, so we have made a decision to work at the pace of the young people.

The two Expeditions and a training weekend have taken place in and around Derbyshire and Staffordshire with good weather and amazing countryside. A lot of learning has taken place for both the Leaders and Young people; this has improved confidence and knowledge around the skills needed.

Now DofE is not all about the Expedition, take a look at the young leader section of this report and you will see young people working on their volunteering section through being young leaders.

One of our Gold members has already completed his Residential Section with what looked like an amazing week away with an organised activity company, this is a great achievement.

We have had young people doing a variety of sport training, being Chefs, Seamstresses and Photographers.

There are currently 15 young people enrolled on the Scheme 7 at Bronze, 2 at Silver and 7 at Gold.

The future of DofE is looking a little brighter with a stable leadership team, plans as to what needs to happen next and several new members in the pipe line. What is also going to make it easier is that we now have Wifi in our meeting place and access to 6 tablets, 3 laptops, a printer and a scanner which will make eDofE less of a chore and something that could take place with the leadership team around to support.

Colin – Adult Volunteer



Loughborough District Network
Mondays 8.15 to 10 pm at Thorpe Acre Scout Centre
Annual Report April 2015 to March 2016

As you might already know over the past year or so Network has restructured all across the country.

Network has gone from being a county based provision to being the responsibility of the district. On a practical level this doesn't make much difference as Network continues to be run by its members for its members.

Also membership into the local network has become automatic for 18-25 year olds in each district. I was pleasantly surprised to find that there is over 60 members associated with Loughborough either through growing out of Loughborough Explorers or by taking up another role within the district.

We are still eagerly awaiting the rollout of the Digital Management Platform which should prove a useful communication and record tool exclusively for Network.

Loughborough Network has continued to meet up regularly and take part in a wide range of activities. We look forward to meeting new people and growing in both numbers and capacity to provide amazing opportunities for young adults.

David
Loughborough District
District Scout Network Commissioner

The Future

Dave is currently in contact with our older young people; he has been on a few outings with us and occasionally helps out with Explorers and the Duke of Edinburgh Award.

We have a number of Explorers turning 18 in late 2016 early 2017 and Dave is working closely with Long Whatton to enable these young people to continue in Scouting as young people while we as a group will encourage a leadership role or Active Support role.

As a group Long Whatton have agreed to support our young people's transition through resources including equipment and volunteers. We are also happy for the young people to continue with their DofE Award with our current provision.

It is envisaged that meetings will occasionally take place somewhere in the northern parishes to accommodate Network Members.

Colin
Adult Volunteer



**Long Whatton and
Diseworth Scout Group**



network
LOUGHBOROUGH DISTRICT



Long Whatton and Diseworth Scout Group
#youshape, Four Week Challenge, Media, Disco Team & Active Support
Annual Report April 2015 to March 2016



#Youth Shape – we now have a volunteer who is willing to look at this as piece of work to help us understand that what is happening is what the young people want, so look out for a few special events where we invite young people along to tell us . . .



Four Week Challenge - Has been taken up by several people this year and we have managed to keep a on to a few them, it is certainly a great way to get adults in to have a go with no pressure and we will continue to use this amazing idea from the Scout Association . . .



Group Media Team – we have a small group of young people and a Parent who looks after our Media Strategy. Several of the Young people take care of our Social Media presence, while our parent is a photographer and movie maker. This is a relatively new idea and although we have had some great photos and a fabulous Germany 2015 video made, the impact of this team will soon start to make a bigger mark on the group . . .



Disco Team – The disco team was formed after a very successful, Bring a Friend Christmas Disco in 2015. In consists mainly of young people and on Leader. Plans are afoot for a Summer Disco in July 2016. The team now has Pink T-Shirts and scarves and their role is to be a bit of Red Coat, they are they to help the younger members join in with Games and Dance. Perhaps they should be called Pinkies . . .



Active Support – Is a little like a Youth Section but for adults, it includes supporting the group and having a bit of a social time as well.



However – with so much going on in the group and with our partnership sections we do attract a lot of help where regular Scout Leader's roles are not really the correct role for those members and that is where this comes in. You have to be over 18 and willing to help out where needed.

'The flexible nature of Scout Active Support lends itself to people who want to be involved in Scouting and benefit from opportunities for flexible volunteering. Scout Active Support can take up as much or as little time as the volunteer wishes.'*

We have a young man called Ben who would like to have a go at this role which will be a big help to the group and partnered sections, so from a night out with a curry to helping on camp will be covered for anyone wishing to be involved.

We are hoping this will grow to be a really useful support network to the group so please let us know if you are interested in joining. An opportunity to be a Scout with little commitment . . .



*The Scout Association <http://members.scouts.org.uk/supportresources/search/?cat=13,249>

We currently use three meeting places for our Sessions

1. Long Whatton Methodist Church

This currently costs £520 per year or approximately £10 per session. We use it on a Friday from around 4.30 to 9.30 pm.

It has served us well for nearly 20 years and we are able to keep quite a bit of kit there both within the School room and a storage area at the back of the Church.



Over the year we have made the following improvements

- Replaced the storage cupboards with lockable steel equivalents
- Replaced our old book shelves with sturdier and more spacious shelves
- Reclaimed a piece of land at the back of the Church to use as a campfire circle
- Built a new pioneer pole storage area at the back of the Church
- Installed Wi-Fi
- Installed leaflet holders for latest flyers
- We are also planning to install outside lighting at the back of the Church to enable our stores to become more accessible during the winter months

2. Long Whatton Friendship Centre

A nice little venue just right for our Monday Beavers, this currently costs £10 per Session; it is only used during term time on Mondays from 3.30 to 4.30pm

Over the next year I would like to negotiate a corner for

- The placement of some notice boards
- The ability to leave a box of equipment there that we use on a weekly basis
- A cupboard shelf in the Kitchen



3. Diseworth Village Hall

A lovely venue with a modern kitchen and toilets, perfect for our Beavers and Cubs on Tuesdays, the cost for the Village Hall is £10 per session on Tuesdays 3.30 to 4.30 pm, again this is a term time only venue. It has a playing field attached to it and is in the heart of the Village. We are currently able to utilise storage space for week to week equipment, and I have purchased some notice boards that can also go away at the end of the session.

Over the next year I would like to negotiate a corner for

- A cupboard shelf in the Kitchen

4. And 4 maybe - of course we are just starting monthly Swimming Sessions at Hind Leys Swimming Pool, this is costing us £45 per session + £10 for a life Guard and £25 for a swimming teacher.

Over the next year I would like to start using

- The already negotiated storage space for equipment we use on a sessional basis



Long Whatton & Diseworth Scout Group
Financial Report Year Ended 31st March 2016

Income	Bank	Cash	Total
Weekly Fees	213.00	2,375.00	2,588.00
Camp/ Activities Fees	14,266.00	1,614.00	15,880.00
Donations	23,519.46	69.16	23,588.62
Ashmount payback	97.49	183.61	281.10
Fridge Magnet sales	0.00	9.00	9.00
Gift Aid	501.12	0.00	501.12
Uniform sales	292.43	106.00	398.43
DofE enrolment	34.00	0.00	34.00
Membership Fees 2015	245.00	0.00	245.00
Membership Fees 2016	2,080.00	275.00	2,355.00
Total Income	41,248.50	4,631.77	£45,880.27

Expenditure	Bank	Cash	Total
Catering	1,964.17	996.19	2,960.36
Activities	9,895.85	108.40	10,004.25
Stationery	789.89	2.00	791.89
Equipment	12,124.96	175.18	12,300.14
Postage / Phone	5.94	103.63	109.57
Fuel / Transport	6,594.04	256.16	6,850.20
Badges /Uniform / Prog resources	2,864.81	21.00	2,885.81
Chapel Rent	848.00	0.00	848.00
Chapel Repairs	28.19	30.00	58.19
Young Leader Training Camp	0.00	30.00	30.00
DofE	130.00	0.00	130.00
Website fees / Media	194.73	0.00	194.73
Membership fees	1,767.60	0.00	1,767.60
Travel Insurance	210.00	0.00	210.00
Refund of loan	2,550.00	0.00	2,550.00
Bank charges	1.21	0.00	1.21
Purchases for Ashmount	295.54	0.00	295.54
Total Expenditure	40,264.93	1,722.56	£41,987.49

Net Income / (expenditure) for the year **£3,892.78**

Bank & Cash balances at year end:	Bank	Cash	Total
Balance b/f 1st April 2015	1,671.60	9.86	1,681.46
Income	41,248.50	4,631.77	45,880.27
	42,920.10	4,641.63	47,561.73
Expenditure	-40,264.93	-1,722.56	-41,987.49
	2,655.17	2,919.07	5,574.24
Cash to Bank	2,843.00	-2,843.00	0.00
Balance as at 31 March 2016	£5,498.17	£76.07	£5,574.24

Bank Reconciliation:

Balance per bank statement 31/03/16	6,403.16
Add Uncredited Lodgements	-
Less Outstanding cheques	-904.99
Bank Balance as at 31 March 2016	£5,498.17

Allocated Funds:

Awards For All	£3,502.82
County Cub Camp	£160.00
Charnwood 2016 visitor day	£55.00
Charnwood 2016	£815.00
	£4,532.82

Fundraising / Donations / Refunds

Award For All	£10,000.00
Leics & Rutland Masonic	£2,000.00
East Midlands Airport	£1,240.18
Helen Jean Cope Fund	£1,000.00
Miss Jones Fund	£1,000.00
LW Community Fund	£638.33
Maud Elkington	£500.00
Tesco Bag Pack	£846.10
James Wise Charitable Trust	£300.00
Florence Turner	£250.00
Everard Foundation	£250.00
Village Show	£248.46
Giving Machine	£90.80
Go Outdoors	£68.17
Morrisons Bag Pack	£66.65
Smith Family	£30.00
Celebration Evening	£12.16
Just Giving	£7.50
Book Sale	£2.00
Disco Team - LW Playgroup	£25.00
	£18,575.35
Above and Beyond map refund	£6.99
L'boro District (resources payback)	£22.20
Eurostar Refund	£37.50
Germany Refund	£2,276.57
Ashmount Payback	£281.10
Staples Refund	£120.00
Bank refund	£0.01
Laws payback	£50.00
Darren Smith payback	£2,500.00
	£23,869.72

Acknowledgements

I love being the driving force behind Long Whatton and Diseworth Scout Group; some people think I must be mad however I do not do it on my own. I have a great team around me who make this group what it is, they make it work and function. Volunteers, Parents and Young People, without mentioning any names, you know who you are, thank you!

We have had many donations and various fundraising activities throughout the year to help us with our work with young people. Where that money has come from is listed in the financial report and there is no way we can thank those funders enough for their generous donations, however thank you.

We work closely together with Ashmount Inclusive Scout Group, Castle Donington Scout Group, Thorpe Acre Scout Group and now 5th Hove Scout Group. They are our friends and we help each other out with ideas, skills, knowledge and resources, we also fall out occasionally, but it wouldn't be a 'Family' of Scouting if we didn't, so another big thank you to our friends and partners in Scouting.

We have had some amazing connections with Scouting overseas in Germany and we have recently made contact with American Girl Scouts we met nearly twenty years ago. It has to be said that Willi (Jens) is an incredible man who has been our friend for nearly ten years. Summer Camp 2015 was the most amazing experience. Thank you for that Jens. Donna from America has popped back into our Scoutie lives and has enable us to reminisce about our early group days and help us to look at our amazing achievements, thank you for that Donna, I am now hoping we will see you again soon!

We are far from the perfect Scout Group but I think we try really hard to bring everyday adventure into young people's lives, actually I think we succeed at that, and I am looking for a few more adventures with our young people.

Colin – Adult Volunteer

